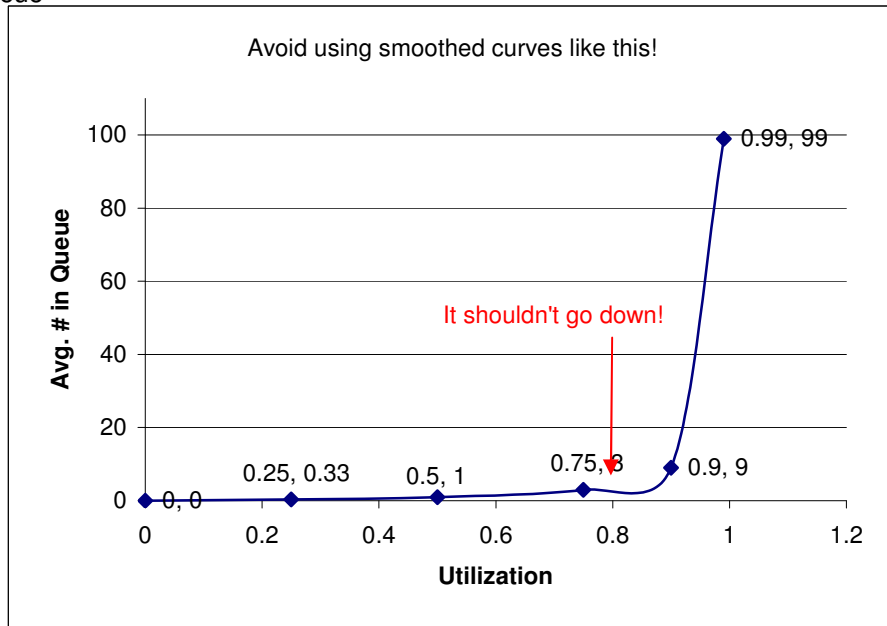


Utilization	Avg # in Queue
0	0
0.25	0.33
0.5	1
0.75	3
0.9	9
0.99	99



There are two big reasons to avoid using smoothed curves

1. They can give the impression that you took more data than you did, and
2. They can give the wrong shape, as in this example: as you increase the utilization on a queueing system, the average # of people waiting should get worse; it shouldn't seem to suddenly decrease around a utilization of 0.8.

Even if the smoothed curve doesn't have problem #2, I still advocate using straight-line connectors instead, due to problem #1.